

Chronic Wasting Disease in Maryland

What is Chronic Wasting Disease (CWD)?

CWD is a naturally occurring disease of the brain and nervous system that causes death in deer, elk, and moose. While CWD has been present in nearby West Virginia since 2005, it was first discovered in Maryland in 2010. The CWD positive deer found in November, 2010 was harvested by a hunter in Green Ridge State Forest in Allegany County.

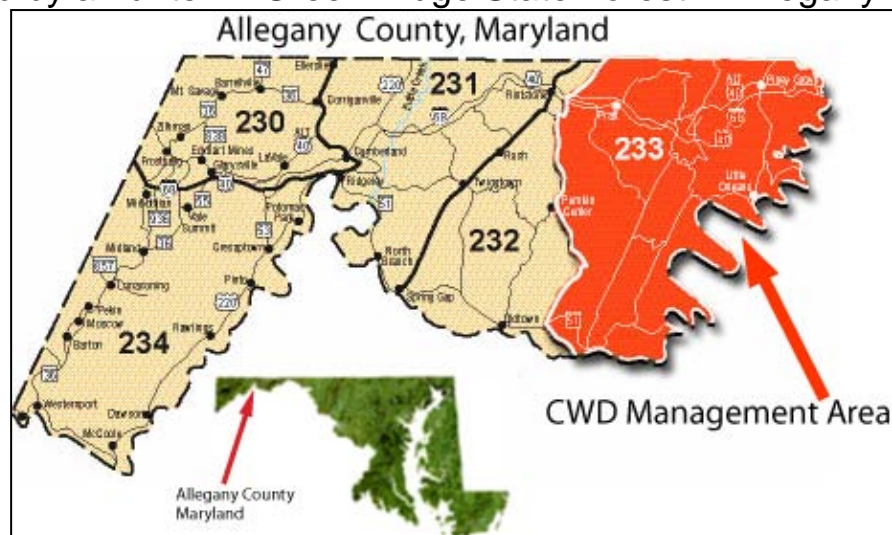
CWD Management

DNR has implemented several measures intended to prevent the unintentional spread of CWD to new areas. The changes outlined below apply only to the CWD Management Area (CWDMA), which is defined as Habitat Management Unit 233 in Allegany County. The CWDMA boundaries are as follows:

Eastern/Southern Boundary: Allegany/Washington County line at the Pennsylvania border south to the Potomac River, then Potomac River (Maryland/West Virginia line) southwest to mouth of the south branch of the Potomac River.

Western Boundary: Straight line from the mouth of the south branch of the Potomac River north to the intersection of Rt. 51 and Lower Town Creek Rd., north-northeast on Lower Town Creek Rd. to Pumpkin Center, north on Town Creek Rd. to Rt. 144, then east on Rt. 144 to Dry Ridge Rd., northeast on Dry Ridge Rd. to the Pennsylvania border.

North Boundary: Maryland/Pennsylvania border from Dry Ridge Rd. east to Allegany/Washington County line.



Baiting and feeding of deer is prohibited in the CWDMA on both private and public land.

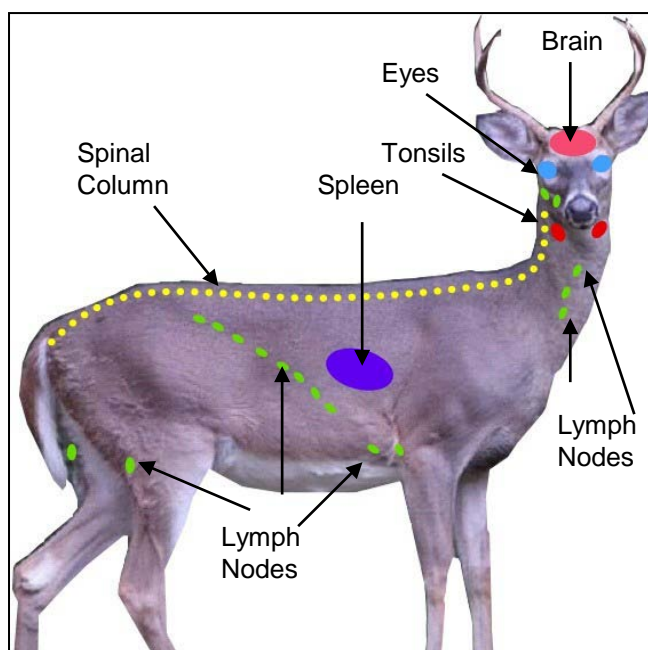
This regulation bans the feeding of all forest game birds and mammals on a year-round basis and includes feed placed for non-hunting purposes. The ban prohibits the placing of fruit, vegetables, nuts, hay, corn, wheat, other feed, salt or other mineral-based attractants.

- Normal agricultural practices and operations are exempted from this ban, including the planting and harvesting of crops and livestock care.
- The normal feeding of song birds remains legal.
- Gland and urine base lures are still permitted for hunting.

Carcass transport restrictions – the transportation of certain parts of deer carcasses out of the CWD Management Area is restricted unless the carcass is being transported directly to an approved deer processor within Allegany County. The following parts of deer may be transported out of the CWD Management Area:

- Antlers with no meat or soft tissue attached
- Hides when clean with no head attached
- Skull plates cleaned of all meat and brain tissue
- Finished taxidermy mounts
- Boneless meat

Deer Carcass Disposal Dumpsters will be available at select locations to dispose of carcass parts before leaving the CWDMA. Please consult the DNR website (www.dnr.maryland.gov) for a list of dumpster locations.



Hunters are reminded that CWD has not been shown to be transmissible to humans. However, DNR recommends that hunters should:

- Wear latex or rubber gloves when field-dressing or butchering deer.
- Remove all internal organs.
- Never eat a deer's brain, eyeballs, spinal cord, spleen, or lymph nodes.
- Avoid cutting through bones or the spinal column (backbone).
- Remove the meat from the bones and spinal column.
- Do not use household knives or utensils when field-dressing or home processing a deer.
- If you saw off antlers or through a bone, or if you sever the spinal column with a knife, be sure to disinfect these tools prior to using them for the butchering or removal of meat.
- Remove all fat, membranes, and connective tissues.
- Use a 50/50 solution of household chlorine bleach and water to disinfect tools and work surfaces. Wipe down counters and let them dry; soak knives for one hour. Wash hands thoroughly.